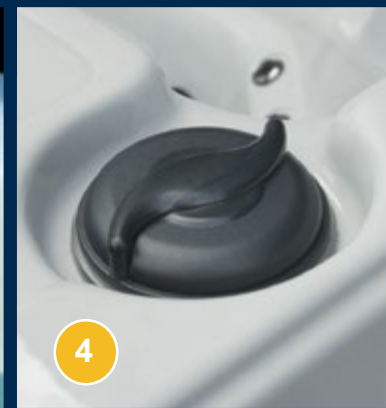




Stereo model shown in Sterling Silver



SL635L

(Lounger Equipped)

Size: 78" x 83" x 36"
Jets: 35 Stainless & Gray
Seats: 6 adults
Gallons: 275
Dry Weight: 725 lbs.
Filled Weight: 3200 lbs.

shorelinespa.com

- 1** Digital Controls
On Demand Hydrotherapy
- 2** Adjustable
Stainless Steel Jets
Jet types may vary by model
- 3** Fountain Jets
- 4** Air & Water Diverters
User Friendly Design Allows
User to Adjust the Amount
of Air and Water Pressure
- 5** Maintenance Free Skirting
- 6** Optional Stereo System
Bluetooth™ / FM Audio with
Docking Station and Marine
Grade Speakers

Standard Features		Optional Features
35 - 4 Swirl Stainless Steel Jets Gecko™ XE Class Pack 220V / 60A Digital Topside Control One 56 F 7.0 bhp Pump	4 kW Heater Icynene™ Foam Insulation Maint. Free Skirting ABS Bottom-Wrap Plasma Ozone Water Treatment	LED Lighting 50 ft ² Filtration Laminar Fountain Jets Padded Headrests VGB Compliant Intake
		<ul style="list-style-type: none"> • (CIRC) Circulation Pump • Stereo System • <i>Waterproof Remote & Subwoofer</i> • (IT) in.Touch • (CL) in.Clear Sanitation System <p>Additional charges apply</p>

Other Shoreline Models



SL863 B

Size: 91" x 91" x 39"
 Jets: 63
 Seats: 7 Adults
 Gallons: 450



SL863 L

Size: 91" x 91" x 39"
 Jets: 63
 Seats: 6 Adults
 Gallons: 450



SL753 B

Size: 82" x 82" x 39"
 Jets: 53
 Seats: 7 Adults
 Gallons: 350



SL753 L

Size: 82" x 82" x 39"
 Jets: 53
 Seats: 6 Adults
 Gallons: 350



SL625 L

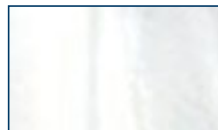
Size: 72" x 72" x 33.5"
 Jets: 25
 Seats: 2 Adults
 Gallons: 130



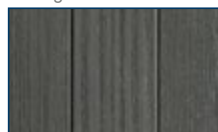
SL525 L

Size: 60" x 83" x 33.5"
 Jets: 25
 Seats: 3 Adults
 Gallons: 225

Maintenance Free Skirting and Color Combination Options



Sterling Silver



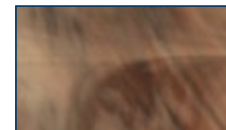
Ash Gray



Storm Cloud



Ash Gray



Tuscan Sun



Cocoa Brown

Your Authorized Shoreline Spas Dealer



The manufacturer reserves the right to change product selections and/or make product modifications.

Your Shoreline Spa Dealer/Contractor is an independent business person and not an agent or employee of POOLCORP™ or any of its subsidiaries. Neither POOLCORP™ nor its subsidiaries accept any responsibility for any representations, statements or contracts made by any Spa Dealer/Contractor.

Note: Color samples shown are representations of actual color, but are for identification only. Because the color may vary, there is no guarantee that this color will be an exact match to the image shown.



The Bluetooth® word mark and logo are registered trademarks owned by Bluetooth SIG, Inc. Other trademarks and trade names are those of their respective owners